



OneManage

FAST NETWORK VIRTUALIZATION

Programmable Management Platform

OneManage is the OneAccess portfolio's management suite automating Customer-Premises Equipment (CPE, either physical pCPE or virtual uCPE) configuration, software image distribution and Voice Quality Monitoring (VQM). Provisioning and VQM are available as two separate licenses that include a common device monitoring and alarm framework. OneManage simplifies daily operations and increases productivity for lower operation costs.

Zero-touch CPE installation is enabled by an auto-configuration protocol such as TR-069 (CWMP) and Call Home protocol. OneManage manages the server-side parameter creation for the auto-configuration protocol. The system enables rapid CPE configuration creation from CLI templates. CPE are managed in groups where the network administrator can apply bulk changes for a whole group.

The zero-touch service activation reduces installation costs for telecom operators and organizations deploying large-scale networks. OneManage also simplifies network maintenance by automating change tasks in hundreds of CPE (pCPEs, uCPEs and VNFs) in one operation. Updating all device types with a new software image or populating a template change into many device configurations does not require significant effort and time any more. While operation costs are streamlined, OneManage's main benefit is also to reduce risks of errors associated with the use of self-designed tools or manual operations.

Critical to SMB's operation is the availability of communications. VQM enable service providers to pro-actively monitor and fix voice quality issues. Customer satisfaction is increased while ensuring low customer churn.

Customizable, User-Friendly Configuration Engine

The configuration generation engine is flexible to support complex scenarios. Including scripting within the template enables the ability to generate advanced configuration files. Adding template input parameter controls avoids user input errors and unexpected output configurations.

With OneAccess solutions, Network engineers do not need programming skills to orchestrate VNF activation and chaining anymore. OneManage facilitates the template design of its uCPE solution with a GUI-based plugin called 'OVP Design Studio'.

Task Automation

CPE are all member of a group. Groups can be organized in sub-groups. The hierarchical organization of CPE enables an administrator to operate bulk operations on logical groups, such as planning a software upgrade or querying connection status.

When changes on templates, software, web files are applied, they are de-facto activated in OneManage database. For a better scalability, the CPE will be updated at their next connection to OneManage. However, several CPE may be selected on OneManage web interface to trigger an immediate update.

Monitoring and Alarm Management

Network status is displayed at a glance with alarmed sites on a map. The operations team can quickly drill-down into graphs from this map and discover the root cause of service degradation.



ABOUT EKinOPS

Ekinops is a leading provider of open and fully interoperable Layer 1, 2 and 3 solutions to service providers around the world. Our programmable and highly scalable solutions enable the fast, flexible and cost-effective deployment of new services for both high-speed, high-capacity optical transport as well as virtualization-enabled managed enterprise services.

Our product portfolio consists of two highly complementary product sets. One, marketed under the Ekinops 360 brand name, provides a single, fully integrated platform for metro, regional, and long-haul applications. The other, marketed under the OneAccess brand name, provides a wide choice of physical and virtualized deployment options for Layer 2 and Layer 3 network functions.

As service providers embrace SDN and NFV deployment models, Ekinops' solutions enable them to deploy today in the knowledge that they can seamlessly migrate to an open virtualized delivery model at a time of their choosing.

A global organization, with operations in 4 continents; Ekinops (EKI) - a public company traded on the Euronext Paris exchange - is headquartered in Lannion, France, and Ekinops Corp., a wholly-owned subsidiary, is incorporated in the USA.



OneAccess



OneAccessNet



@OneAccess



www.oneaccess-net.com/blog

ONEACCESS
Fast Network Virtualization



Specifications

General

- Web-based GUI
- Multi-tenant user management: user profiles, customer view
- Northbound interface to create / update / query CPE, retrieve graph data
- Nightly snapshot and restore operations
- Server responsiveness self-monitoring
- Device management in hierarchy of groups

Provisioning

- Standard-based provisioning protocols: CWMP (TR-069), Call Home
- Zero-touch configuration and firmware deployment
- Automatic configuration backup
- Configuration versioning and difference log
- Configuration consistency audit
- Fully customizable templates:
 - Embedded scripting to generate CLI text files
 - Programmable input field types and checks

Alarm Management and Device Metrics Collection

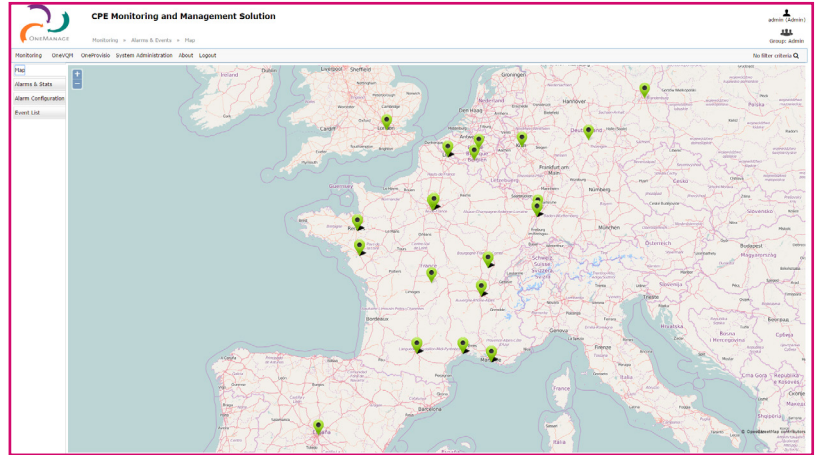
- Provisioning, voice quality degradation events mapped to alarms
- Custom alarm configuration and threshold
- Alarm filtering

Voice Quality Monitoring (VQM)

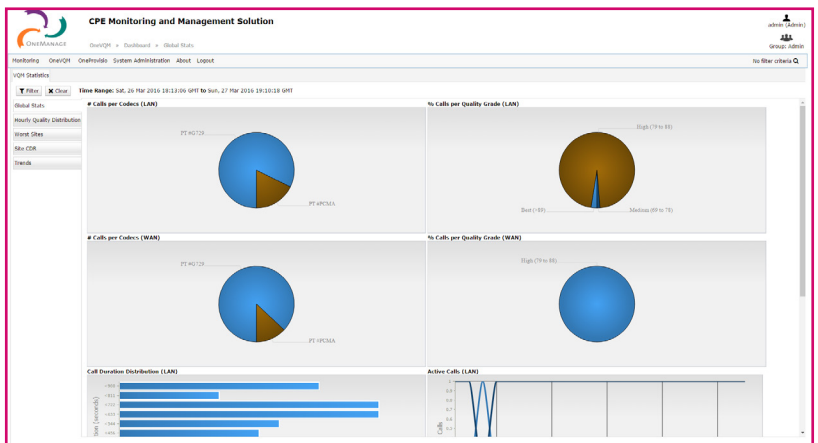
- VQM metrics: WAN- and LAN-side MOS (R-factor), jitter, losses
- Detailed Call Detail Records (CDR)
- Graph display with flexible filtering criteria
- Trend graphs (weekly, monthly basis) and top-worst sites
- Click and drill-down with graphs
- PDF report generation with customizable templates

Installation

- Up to 30,000 CPE managed per server in provisioning only mode
- Up to 5,000 CPE managed per server (provisioning/VQM/ alarm management)
- Recommended Hardware configuration: 8 GB RAM, 500 GB HDD, >4*2 GHz CPU
- Recommended Linux distribution Ubuntu 14.0 or greater, Debian 8.6 or greater, RedHat 7.3 and greater. Other Linux distribution on request.
- Deployment in virtual machine or physical hardware
- LAMP system (Linux, Apache, MySQL, PHP)



Alarm display on a map



VQM statistics

CPE Status	Hostname	Group	SW Version	Template	MW Type	Location	User Group	Serial Number	IP Address	Type
OK	OA_0		ONE056-VQSP_PRO...	DaisyTemplate	one70/270/700	Belgium	Admin		218.105.164.36	OVIP
OK	OA_1		ONE056-VQSP_PRO...	DaisyTemplate	one70/270/700	Bangalore	Admin		10.4.16.71	OVIP
OK	OA_2		ONE056-VQSP_PRO...	DaisyTemplate	one70/270/700	Huá	Admin		16.20.98.125	OVIP
OK	OA_4		ONE056-VQSP_PRO...	DaisyTemplate	one70/270/700	Turkur	Admin		209.93.71.107	OVIP
OK	OA_5		ONE056-VQSP_PRO...	DaisyTemplate	one70/270/700	Jamkhand	Admin		230.199.142.217	OVIP
OK	OA_6		ONE056-VQSP_PRO...	DaisyTemplate	one70/270/700	Myore	Admin		91.146.189.178	OVIP
OK	OA_7		ONE056-VQSP_PRO...	DaisyTemplate	one70/270/700	Jamoga	Admin		143.122.232.239	OVIP
OK	OA_8		ONE056-VQSP_PRO...	DaisyTemplate	one70/270/700	bagalkot	Admin		88.60.27.145	OVIP
OK	OA_9		ONE056-VQSP_PRO...	DaisyTemplate	one70/270/700	Maldevis	Admin		133.229.237.154	OVIP
OK	OA_10		ONE056-VQSP_PRO...	DaisyTemplate	one70/270/700	France	Admin		182.197.192.136	OVIP
OK	OA_11		ONE056-VQSP_PRO...	DaisyTemplate	one70/270/700	Germany	Admin		149.165.51.52	OVIP
OK	OA_12		ONE056-VQSP_PRO...	DaisyTemplate	one70/270/700	China	Admin		172.90.153.205	OVIP
OK	OA_13		ONE056-VQSP_PRO...	DaisyTemplate	one70/270/700	Singapore	Admin		168.168.7.158	OVIP
OK	OA_14		ONE056-VQSP_PRO...	DaisyTemplate	one70/270/700	Dubai	Admin		95.87.195.304	OVIP
OK	OA_15		ONE056-VQSP_PRO...	DaisyTemplate	one70/270/700	Netherland	Admin		182.75.161.191	OVIP
OK	OA_16		ONE056-VQSP_PRO...	DaisyTemplate	one70/270/700	Belgium	Admin		106.246.82.33	OVIP
OK	OA_17		ONE056-VQSP_PRO...	DaisyTemplate	one70/270/700	Chennai	Admin		134.43.12.76	OVIP
OK	OA_18		ONE056-VQSP_PRO...	DaisyTemplate	one70/270/700	Koromangla, Dempl...	Admin		114.228.31.201	OVIP

Router List